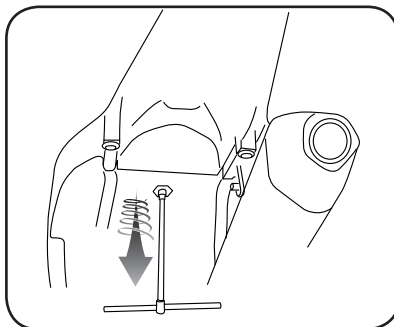
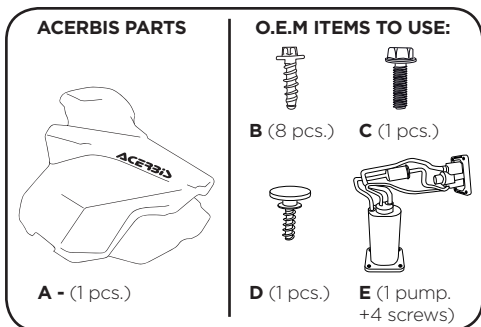


11,5LKTM SXF250/350 FUEL INJECTED 4T 2011-12 TANK

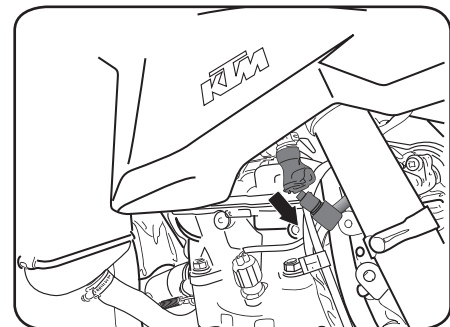
SERBATOIO 11,5L KTM SXF250/350 FUEL INJECTED 4T 2011-12
0016298./225030



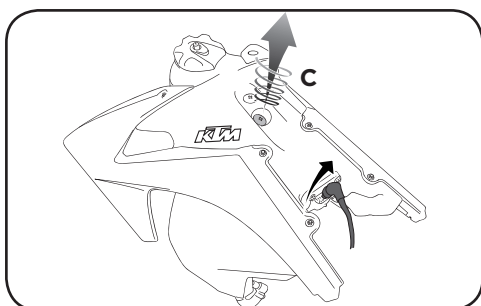
COD. 500002569 REV 2



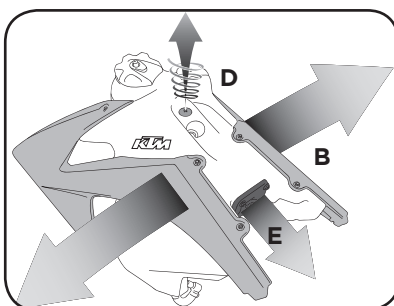
1. Rimuovere la sella
Remove the seat



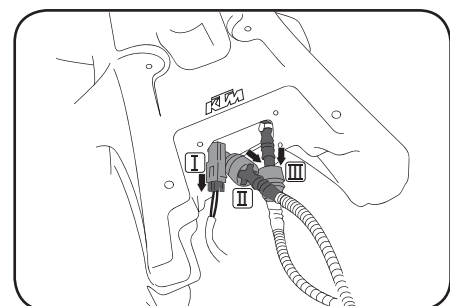
2. Rimuovere le utenze
Remove the fuel line fittings



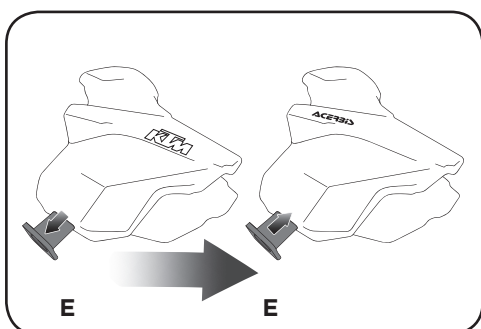
3. Svitare la vite serbatoio (C). Sconnettere il cavo di alimentazione della pompa
Unscrew the tank screw. Disconnect the fuel pump power cable



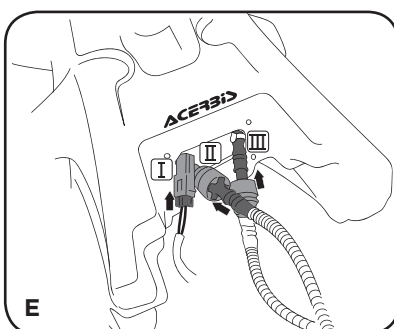
4. Rimuovere il serbatoio ktm. Rimuovere la vite-sella. Rimuovere i fianchetti. Rimuovere la pompa
Remove the ktm tank. Remove the seat screw. Remove the radiator scoops. Remove the fuel pump



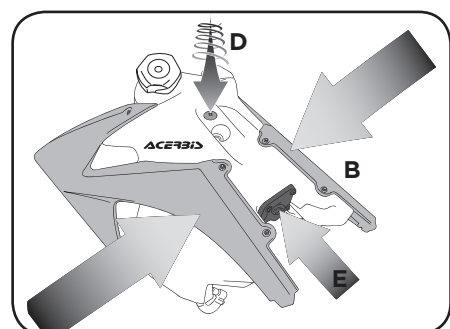
5. Sconnettere i cavi
Disconnect the cables



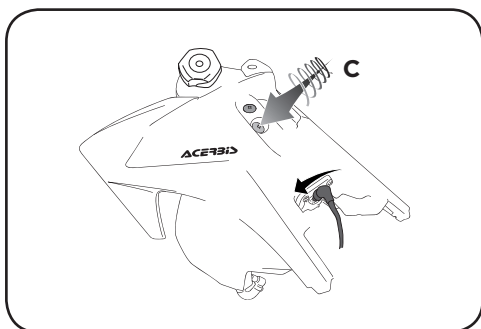
6. Rimuovere la pompa e montare la pompa sul serbatoio Acerbis
Remove the pump and install the fuel pump on the Acerbis tank
TORQUE SPEC: 2,2 FT/LBS 3,0N/m



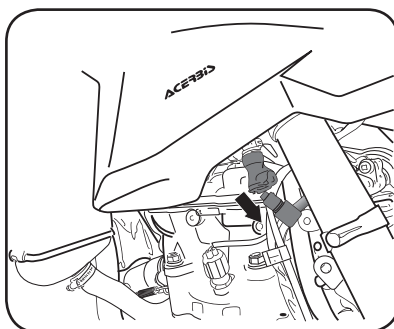
7. Posizionare il serbatoio acerbis e connettere i cavi
Place the acerbis tank and connect the cables



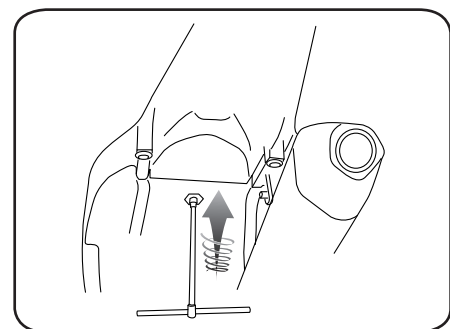
8. Mettere la vite-sella. Montare i fianchetti. Rimontare la pompa
Install the seat screw. Attach the radiator scoops. Reassemble the pump



9. Avvitare la vite serbatoio. Connettere il cavo di alimentazione della pompa.
Install the tank screw. Connect the fuel pump power cable



10. Rimontare le utenze
Reassemble the fuel line Fittings



11. Rimontare la sella
Install the seat

ACERBIS®

SOUL AND PASSION

Thank you for purchasing an ACERBIS fuel tank

WARNING

It is **EXTREMELY IMPORTANT** that the fuel tank be properly installed. To ensure proper installation, it is **STRONGLY RECOMMENDED** that the tank be installed only by a qualified OEM licensed dealership mechanic. Improper installation could result in serious injury or even death.

If self-installed NOTE THE FOLLOWING. Particular attention must be paid to excessive fuel line length and fuel line proximity to hot engine areas and pipes to prevent fire.

Clean tank interior thoroughly before installation. Install this fuel tank only in a well ventilated area, as gasoline fumes are extremely dangerous. Do not start or operate the vehicle if there are any fuel leaks! Read all instruction first before beginning installation.

DISCLAIMER

Due to uncontrolled variables in the manufacturing process of rotationally molded fuel tanks, the fuel tank may vary in size and shape by up to 7% of the manufacturer's original listed capacity.

WARNING!

Clean tank interior thoroughly before installation. install this fuel tank only in a well ventilated area, as gasoline fumes are extremely dangerous. do not start operate the vehicle if there are any fuel leaks! acerbis recommends that installation be done by licensed mechanic. read all instructions first before beginning installation.

ATTENZIONE!

pulire a fondo l'interno del serbatoio prima dell'installazione. svolgere l'operazione unicamente in un ambiente ventilato, poiche' i fumi della benzina sono estremamente pericolosi. non avviare il veicolo se si riscontrano perdite di carburante! acerbis raccomanda l'installazione presso meccanici autorizzati. leggere attentamente le istruzioni prima di iniziare il montaggio.

DISCLAIMER:

DISCLAIMER: Due to uncontrolled variables in the manufacturing process of rotationally molded fuel tanks, the fuel tank may vary in size and shape by up to 7% of the manufacturer's original listed capacity.

LIBERATORIA

LIBERATORIA: A causa di variabili inponderabili nel processo di stampaggio rotazionale dei serbatoi, questi possono differire in forma e dimensioni fino al 7% rispetto alla capacita' dichiarata.

**FOR COMPETITION USE ONLY
SOLO PER USO AGONISTICO**